



GAS GAS

2011

EC-250/300-E 2011

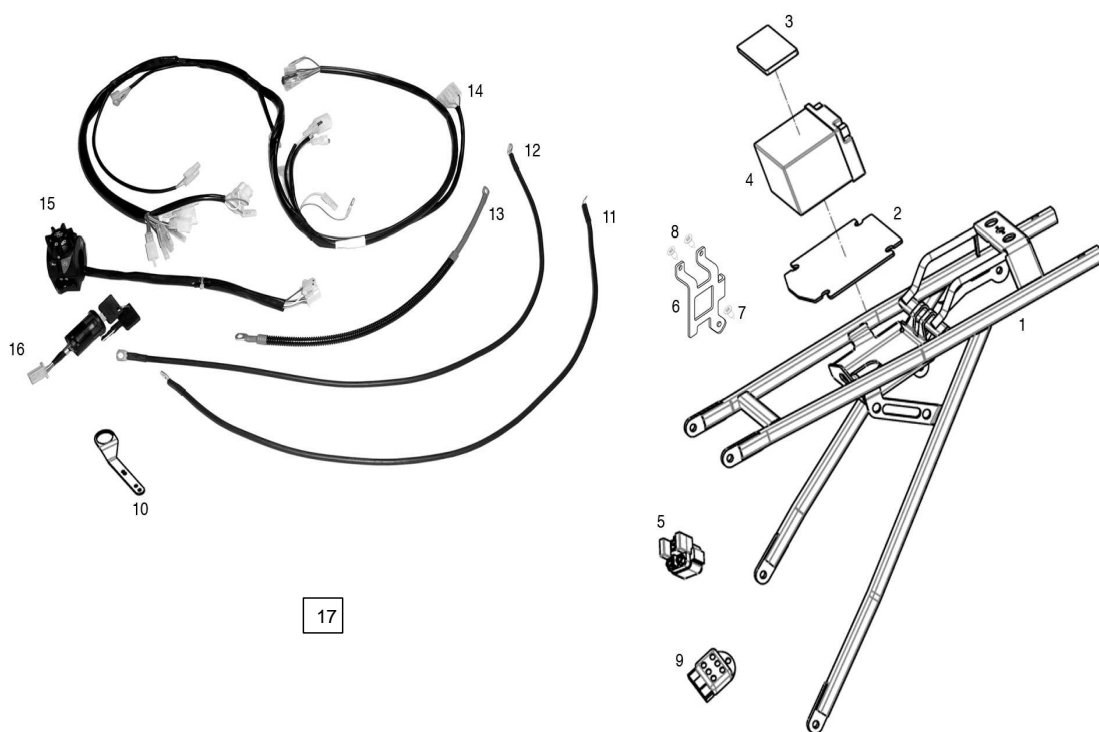
DESPIECE / / PART LIST



GAS GAS

EC-250/300-E 2011

Cableado y subchasis arranque eléctrico / Wiring and subframe electric starter



1

Nº	DESCRIPCION / DESCRIPTION	300cc	Cant.
1	SUBCHASIS 2T CON BATERIA / SUBFRAME 2 STROCKES WITH BATTERY	BE120002510	1
2	GOMA BASE BATERIA / RUBBER PLATE UNDER BATTERY	BE450012510	1
3	ESPUMA SOBRE BATERIA / FOAM PLATE ABOVE BATTERY	BE450102510	1
4	BATERIA YTZ 7 S / BATTERY YTZ 7 S	BFS4001340803	1
5	RELÉ / RELAY	BFS3407524001	1
6	SOPORTE CDI / ECU SUPPORT	EE551002508	1
7	TORNILLO PHILIPS 6.6X16 / PHILIPS SCREW 6.3X16	T0706316	1
8	TORNILLO / SCREW	MFS450580013	2
9	REGULADOR / VOLTAGE REGULATOR AND RECTIFIER	EE512002510	1
10	SOPORTE LLAVE DE CONTACTO / SUPPORT FOR IGNITION KEY	BE050634072	1
11	CABLE RELE MOTOR ARRANQUE ENDURO 2T / STARTER RELAY CABLE EC 2 STROKES	EE401102510	1
12	CABLE NEGATIVO BATERIA EC 2T / BATTERY NEGATIVE POLE CABLE EC 2 STROKES	EE400102510	1
13	CABLE POSITIVO BATERIA EC 2T / BATTERY POSITIVE POLE CABLE EC 2 STROKES	EE400152510	1
14	INSTALACION ELECTRICA COMPLETA EC 2T ELEC. / WIRING HARNESS	EE101002510	1
15	CONMUTADOR LUCES ARRAN. ELEC. / START-STOP-LIGHT SWITCH	EE602002510	1
16	CERRADURA DE CONTACTO CON CIERRE / IGNITION KEY	BQ050434032	1
17	KIT ARRANQUE ELÉCTRICO	EE855002510	1

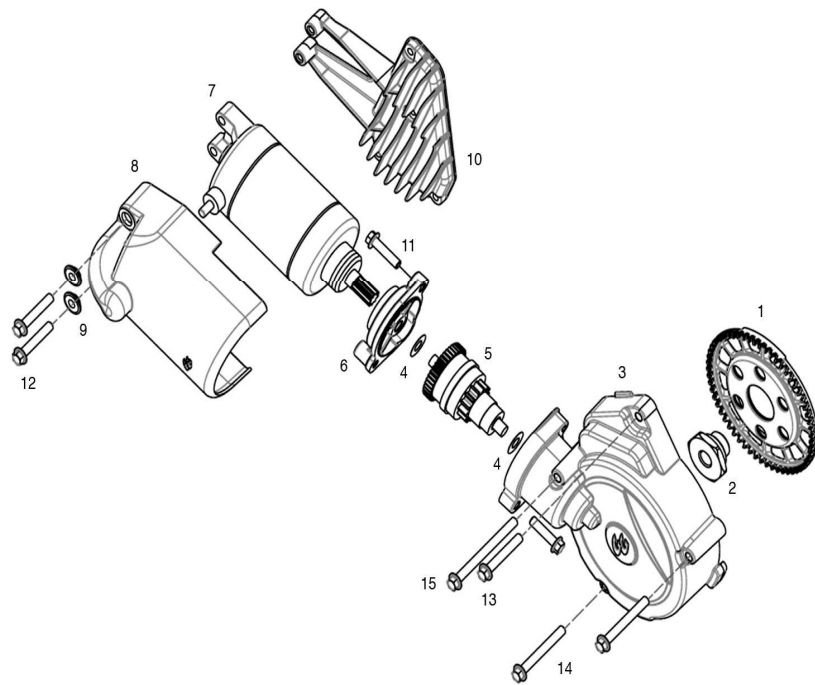
GAS GAS

Chasis 1

**Motor arranque
eléctrico / Electric**

GAS GAS

EC-250/300-E 2011



1

Nº	DESCRIPCION / DESCRIPTION	300cc	Cant.
1	CORONA DE ARRANQUE / IGNITION SPROKET	EE802002510	1
2	TUERCA VOLANTE MAGNÉTICO / ROTOR NUT	ME700102510	1
3	TAPA ENCENDIDO / IGNITION COVER	ME601002510	1
4	ARANDELA / WASHER	ME25616070	2
5	BENDIX / BENDIX	EE80100CT2510	1
6	TAPA DEL BENDIX / BENDIX COVER	EE801302510	1
7	MOTOR ELÉCTRICO / E-START ENGINE	EE800002510	1
8	TAPA DEL MOTOR ELÉCTRICO / E-START ENGINE COVER	EE851002510	1
9	CASQUILLO / BUSH	BE320602510	2
10	TAPA DE LA VÁLVULA DE ESCAPE / EXHAUST VALVE COVER	ME720302510	1
11	TORNILLO HEXAGONAL M6X25 / SCREW M6X25	T0206025	2
12	TORNILLO HEXAGONAL M6X30 / SCREW M6X30	T0206030	2
13	TORNILLO HEXAGONAL M6X40 / SCREW M6X40	T0206040	1
14	TORNILLO HEXAGONAL M6X50 / SCREW M6X50	T0206050	2
15	TORNILLO HEXAGONAL M6X70 / SCREW M6X70	T0206070	1

GAS GAS

Motor 1

